

ThimbleCreek Quilt Shop Free Pattern

CHECKERBOARD CHERRIES

Approximately 66" x 66"

This is a really fun, easy quilt to make!

Fabric Requirements

Based on 42"-44" width

1/4 yard brown for stems

1/2 yard green for leaves and border

1 yard white for blocks and borders

1 yard red for blocks and cherries

1-1/2 yards yellow for cherry blocks

1-1/4 yards black for blocks and borders

4 yards for backing

1/2 yard for binding

ThimbleCreek Quilt Shop Free Pattern



Checkerboard Cherries

Approximately 66" x 66"
Unfinished block size is 8 1/2" x 8 1/2"

1. Black Fabric - Cut 10 strips 2 1/2" x the width of the fabric.
Remaining fabric is for the border.

2. White Fabric - Cut 8 strips 2 1/2" x the width of the fabric. Remaining fabric is for the border.

3. Sew 3 sets of black-white-black strips. **A**
Press toward the black fabric.

4. Sew 2 sets of white-black-white strips. **B**
Press toward the black fabric.

5. Cut into 2 1/2" segments. You should get 16 segments per strip, you need 50 black-white-black and 25 of the white-black-white.

6. Sew into 25 - 9 patch blocks. **C** This will measure 6 1/2" square.

7. Cut Red fabric into 20 - 1 1/2" strips and subcut into 50 - 6 1/2" pieces and 50 - 8 1/2" pieces. Save the remaining red fabric for the cherry applique.

8. Sew the 6 1/2" pieces onto each side of the 9 patch and then sew the 8 1/2" pieces to the top and bottom of the Block. **D** This will measure 8 1/2" square.

9. Cut the Yellow fabric 9" by the width of the fabric and then into 24 9" Squares.

10. Applique the cherries stems and leaves onto the yellow squares, using your favorite applique method. Use the cover photo for a placement guide. Trim the squares to measure 8 1/2" x 8 1/2".

11. Assemble the quilt top using the diagram for block placement.

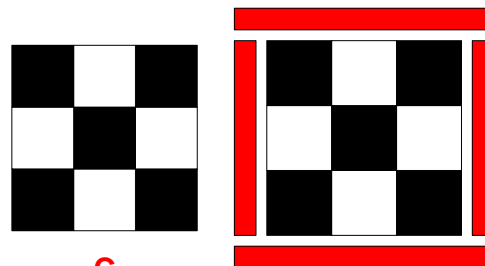
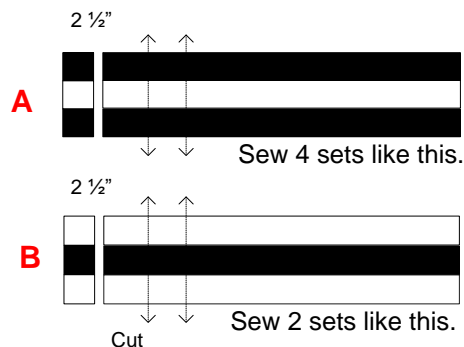
Borders

1. Inner border - cut green fabric 1 1/4" and sew to quilt sides and then top and bottom.

2. Outer border - cut 30 black square and 30 white squares 4 1/2" x 4 1/2".

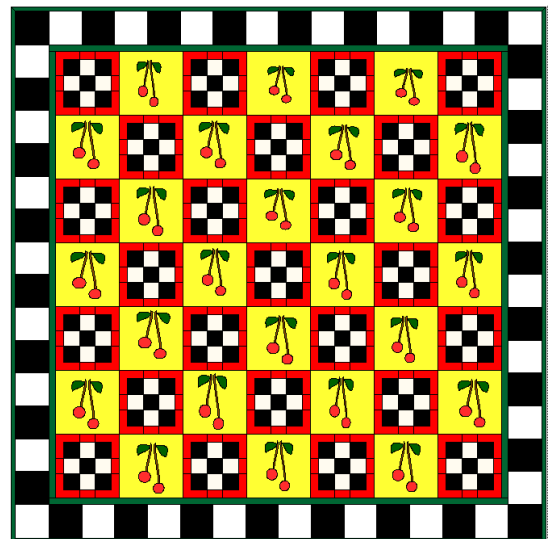
3. Sew two rows of 14 alternating black and white squares and two rows of 16 alternating black and white squares. Sew the shorter borders on each side of the quilt top and then sew the longer borders on the top and bottom of the quilt.

Layer, baste and quilt. Bind it and you are finished!!! Enjoy your new quilt!



C

D



ThimbleCreek Quilt Shop Free Pattern

